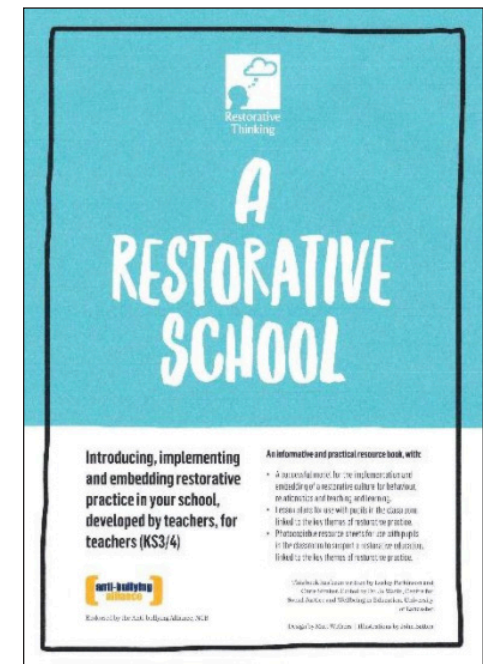
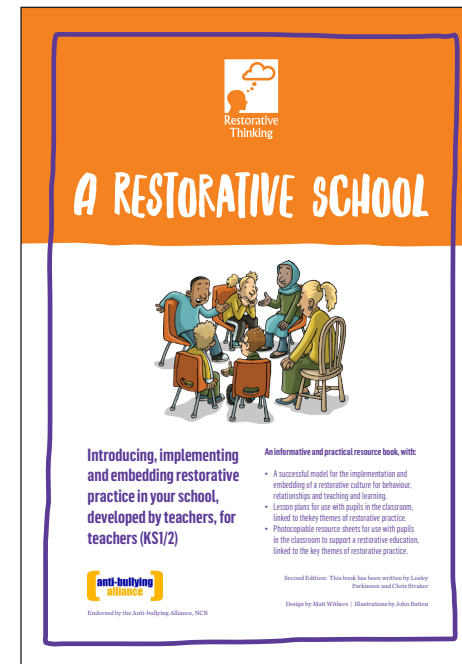




# RESTORATIVE THINKING

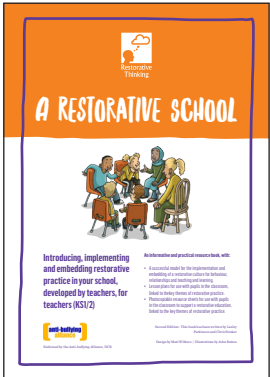

Our resources are developed with head teachers, teachers, teaching assistants, pupils, governors and education psychologists. We regularly review and update our publications and offer support to all schools using our resources via telephone and e-mail. Restorative Thinking Limited is a Social Enterprise and any profits from sales go directly into research and development.



We recommend that teaching staff delivering our resources with pupils have, as a minimum, completed a 1-day restorative practice principles and skills training course with a training provider that holds the TPQM (Training Provider Quality Mark) or have completed our e-Learning CPD: 'Fostering Restorative Practice in Schools'.

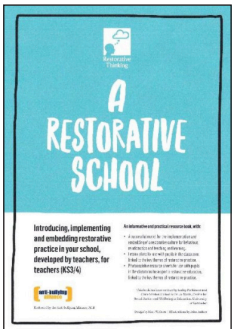

# Restorative Thinking Primary School Resources



Item	Details	Price
<p><b>Order code: P1</b></p> <p>A Restorative School: Introducing, implementing and embedding restorative practice in your school, developed by teachers, for teachers (KS1/2)</p> 	<p>53-page A4 booklet with information, lesson ideas and photocopiable resources to support the development of a restorative education in primary and special schools</p>	<p>£95.00 (plus postage) £165.00 (with set of four hand puppets and 'Big Book' with stories to use to explore how to draw on restorative practice to resolve conflict)</p>
<p><b>Order code: P2</b></p> <p>Primary bookmarks</p>	<p>Colourful bookmarks with restorative questions for pupil and teacher use</p>	<p>100 bookmarks: £53.00 (plus P&amp;P)</p> <p>200 bookmarks: 93.00 (plus P&amp;P)</p>
<p><b>Order code: P3</b></p> <p>'Fostering Restorative Practice in Schools' e-Learning CPD</p> 	<p>5-hour e-Learning CPD course introducing key restorative principles and skills. Developed with primary, secondary and special schools.</p>	<p>From £850 per school. Please contact us.</p>

# Restorative Thinking Secondary School Resources



Item	Details	Price
<p><b>Order code: S1</b></p> <p>A Restorative School: Introducing, implementing and embedding restorative practice in your school, developed by teachers, for teachers (KS3/4)</p> 	<p>72-page A4 booklet with information, lesson ideas and photocopiable resources to support the development of a restorative education in secondary and special schools</p>	<p>£115.00 (plus postage)</p>
<p><b>Order code: S2</b></p> <p>Secondary bookmarks</p>	<p>Colourful bookmarks with restorative questions for pupil and teacher use</p>	<p>100 bookmarks: £53.00 (plus P&amp;P)</p> <p>200 bookmarks: 93.00 (plus P&amp;P)</p>
<p><b>Order code: S3</b></p> <p>'Fostering Restorative Practice in Schools' e-Learning CPD</p> 	<p>5-hour e-Learning CPD course introducing key restorative principles and skills. Developed with primary, secondary and special schools.</p>	<p>From £850 per school. Please contact us.</p>



Name and contact number:

I would like to order:

<b>Publication/item</b>	<b>Number of copies</b>	<b>To be delivered to (name and full address):</b>

Delivery is normally within two weeks of the order date.

Please e-mail this form to: [lesley@restorativethinking.co.uk](mailto:lesley@restorativethinking.co.uk)